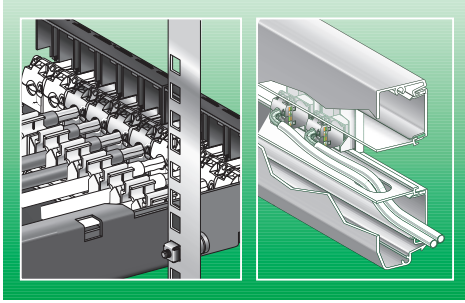


Actassi S-One Shielded Connector



S1A5187002-02 / AAK019D7002

December 2010

Schneider
Electric

Cat 6_A



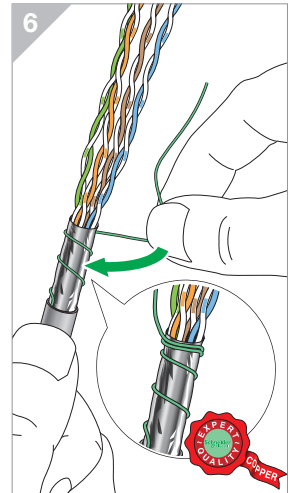
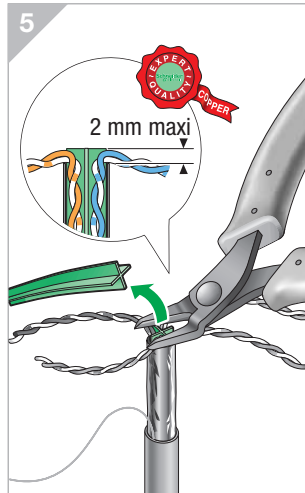
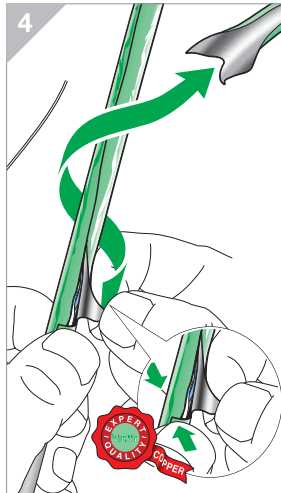
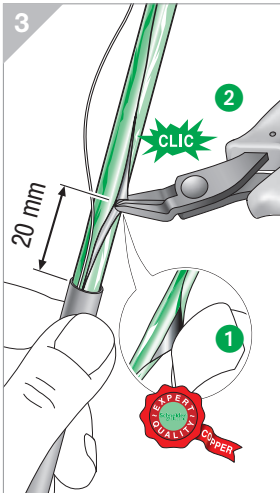
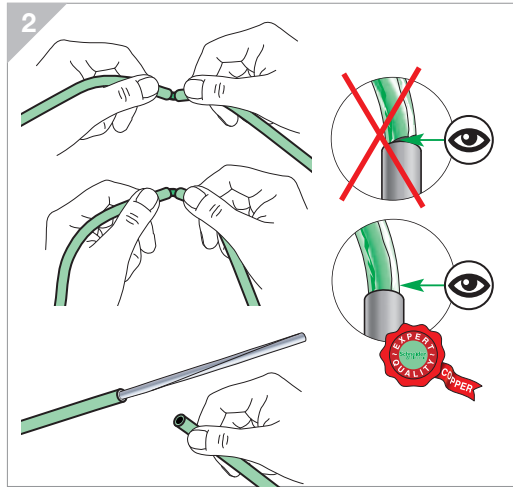
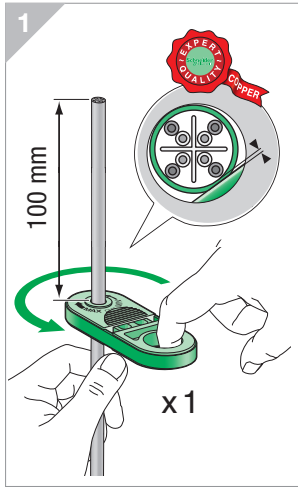
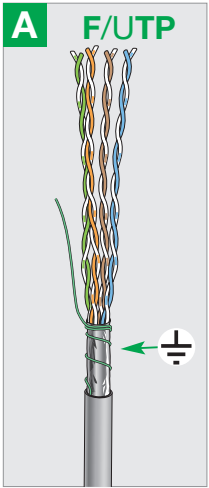
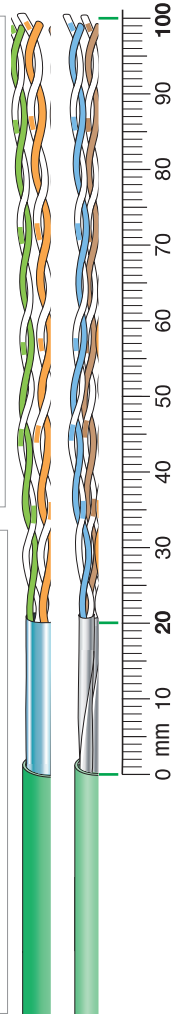
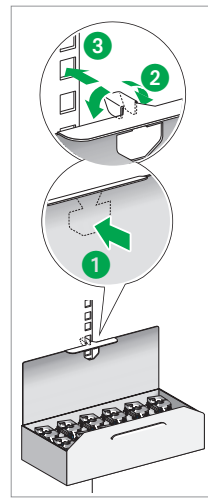
Cat 6

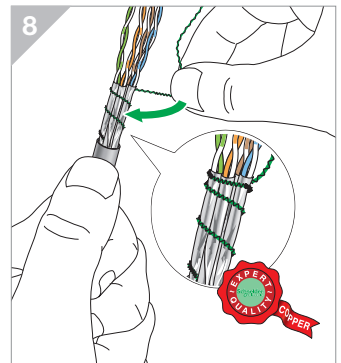
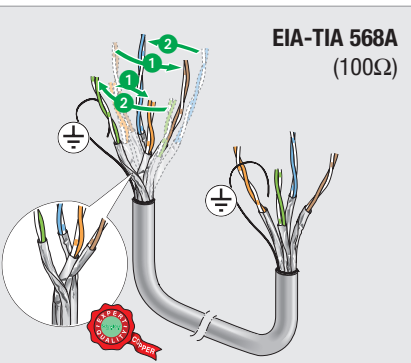
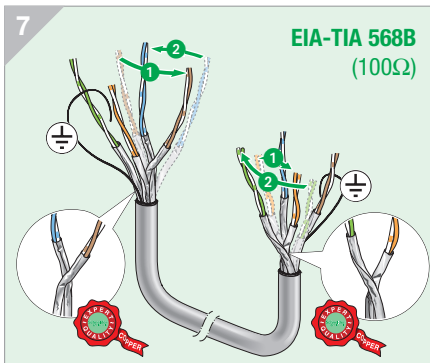
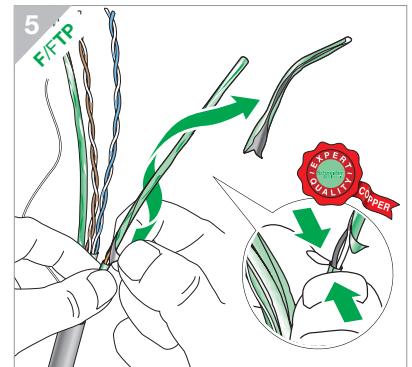
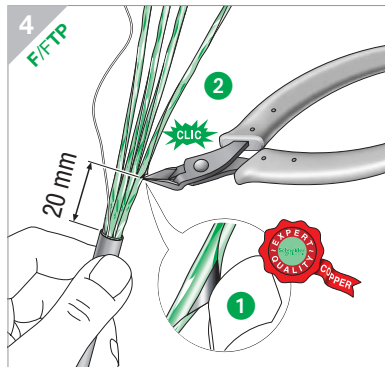
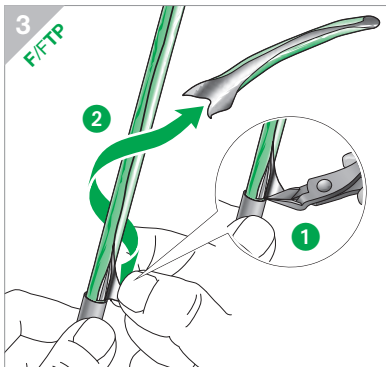
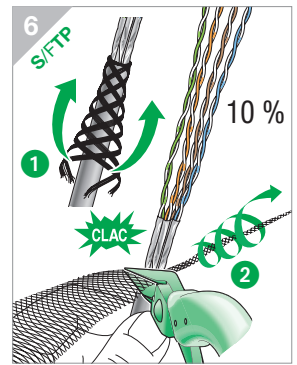
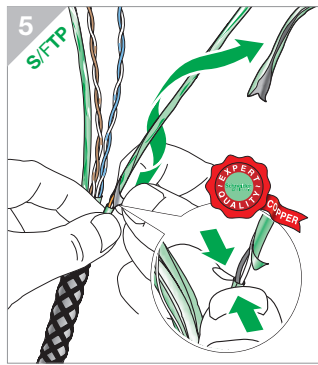
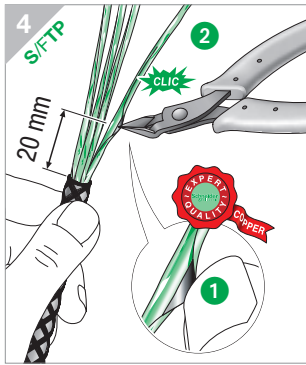
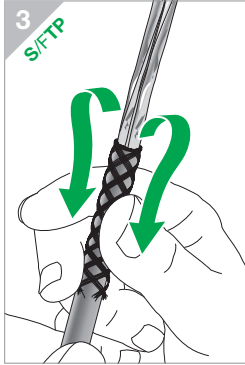
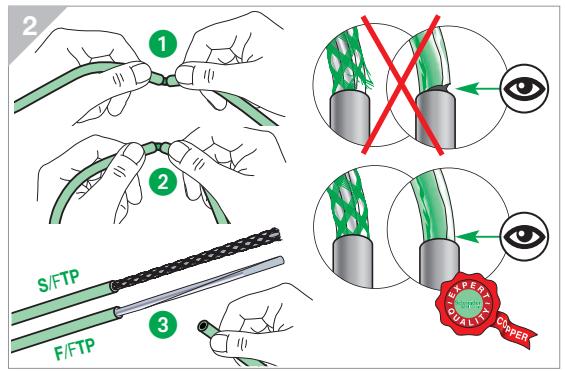
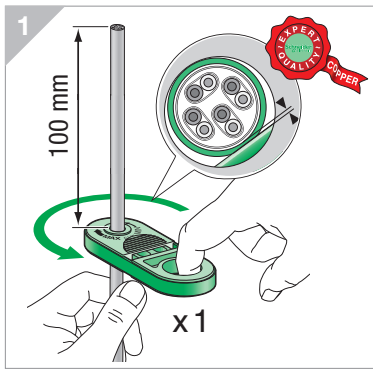
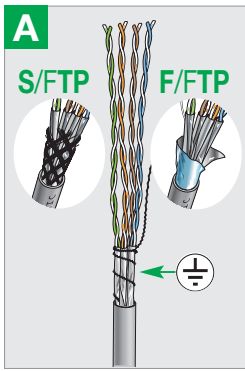


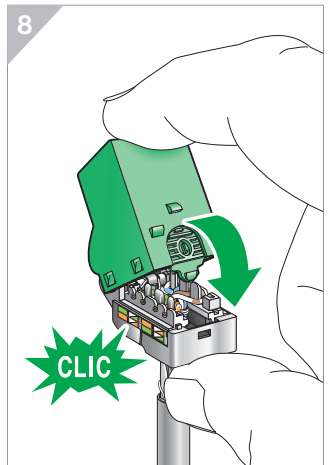
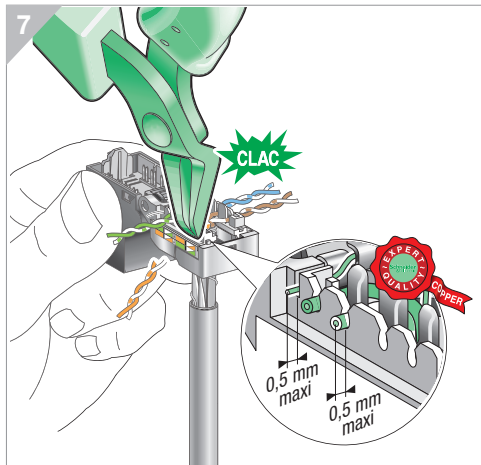
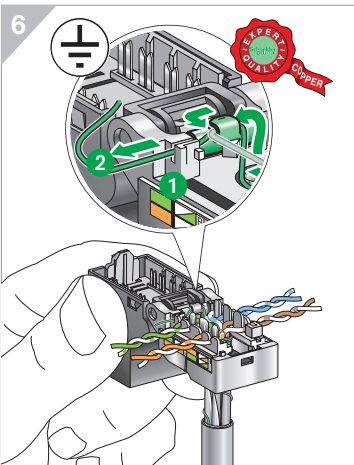
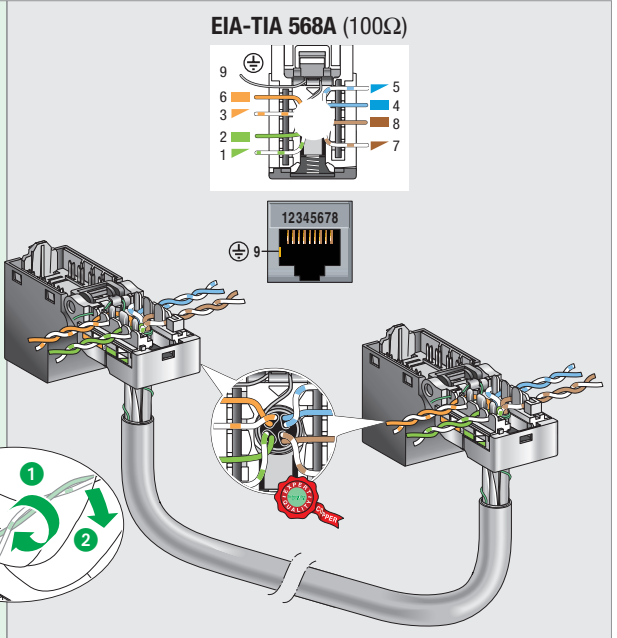
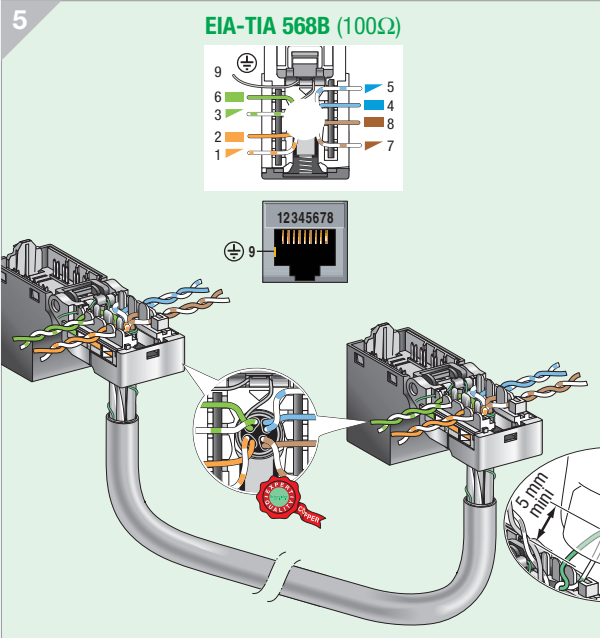
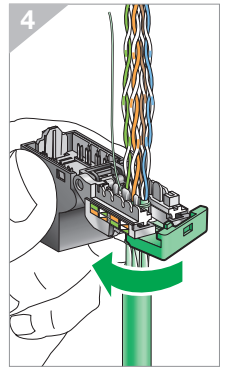
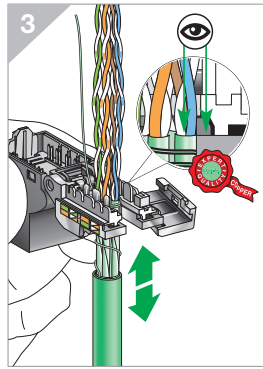
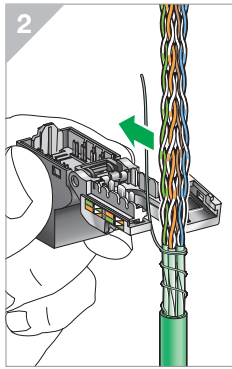
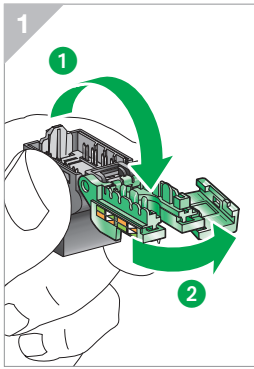
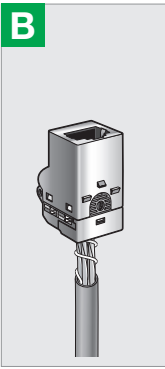
Cat 5e

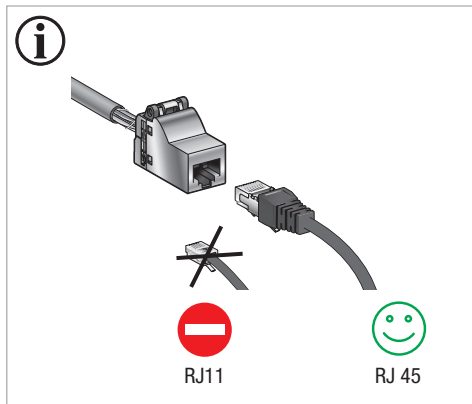
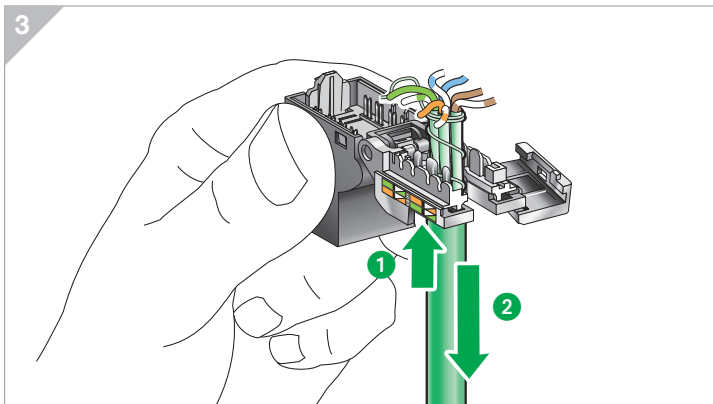
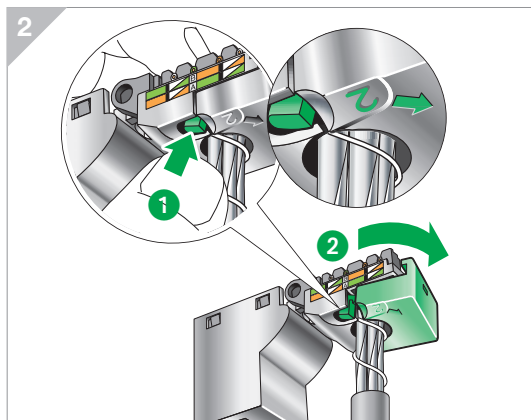
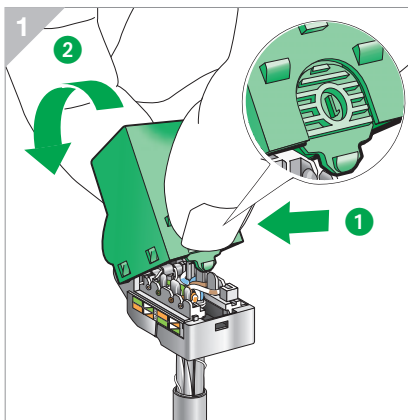
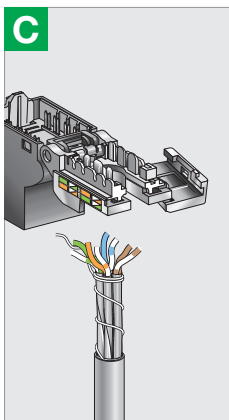
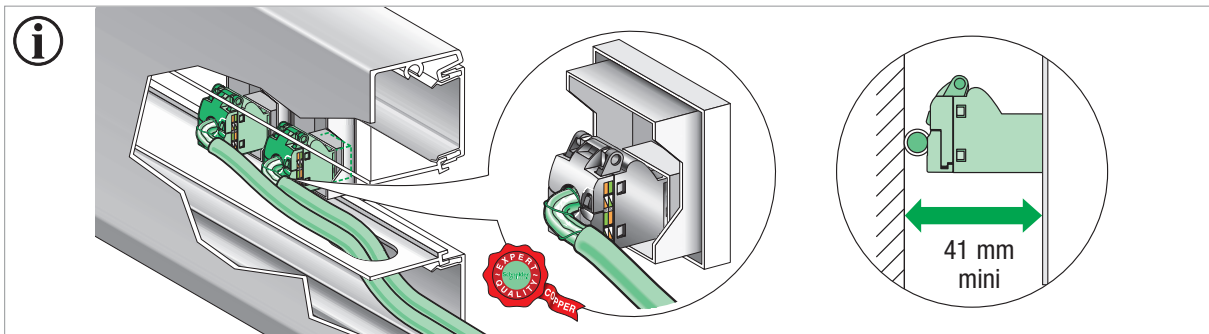


VDIR580020









EN. This product must be installed, connected and used in compliance with applicable standards and/or installation regulations.

As standards, specifications and designs develop from time to time, always ask for confirmation of the information given in this publication.

FR. Ce produit doit être installé, connecté et utilisé conformément aux normes applicables et/ou règles d'installation.

Du fait que les normes, les spécifications et les schémas peuvent être modifiés, nous vous recommandons de vérifier que la documentation de cette publication soit mise à jour.

DK. Produktet skal installeres, tilsluttes og anvendes i henhold til gældende standarder og installationsregler. Få altid bekræftet, om oplysningerne i dette dokument stadig er gældende, da specifikationer, standarder og design ændres løbende.

SV. Denna produkt måste installeras, anslutas och användas i enlighet med gällande standarder och installationsföreskrifter.

Eftersom standarder, specifikationer ändras med tiden, kontrollera att uppgifterna i denna publikation är aktuella mot gällande standarder.

NO. Produktet skal installeres, tilkoples og anvendes i henhold til gjeldende standarder og forskrifter. Standarder, spesifikasjoner og design endres fra tid til annen. Kontroller derfor alltid at opplysningene i denne publikasjonen er riktige.

FI. Tämä tuote tulee asentaa, kytkeä ja käyttää voimassa olevien standardien ja/tai säännösten mukaisesti.

Standardit, määräykset ja mallit muuttuvat ajan myötä, varmista, että tämän julkaisun tiedot vastaavat nykyhetken vaatimuksia.

NL. Dit product moet geïnstalleerd, aangesloten en gebruikt worden in overeenstemming met de geldende normen en/of installatievoorschriften.

Omdat normen, specificaties en modellen kunnen evolueren in de tijd, altijd vragen om bevestiging van de informatie in deze publicatie.

ES. Este producto debe ser instalado, conectado y utilizado en acuerdo con las normas aplicables y/o las reglas de instalación.

Dado que las normas, las especificaciones y los diseños se desarrollan de vez en cuando, se recomienda se aseguren que la información dada en esta publicación sea la correcta.

IT. Questo prodotto deve essere installato, collegato ed usato in osservanza agli standards d'installazione e delle regolamentazioni di legge ad esso applicabili. In ragione dell'evoluzione delle Norme e dei materiali, le caratteristiche riportate nei testi e nelle illustrazioni del

presente documento si potranno ritenere impegnative solo dopo conferma da parte di Schneider Electric.

DE. Dieses Produkt muss gemäß den geeigneten Normen und/oder Installationsvorschriften installiert, verkabelt und verwendet werden.

Da die Normen, die Spezifikationen und die Schemata geändert werden können, empfehlen wir Ihnen sicherzustellen, dass der Inhalt dieser Veröffentlichung stets auf dem neuesten Stand ist.

Schneider Electric Industries SAS
35, rue Joseph Monier
92500 Rueil-Malmaison, France
Tel : +33 (0)1 41 29 85 00

www.schneider-electric.com